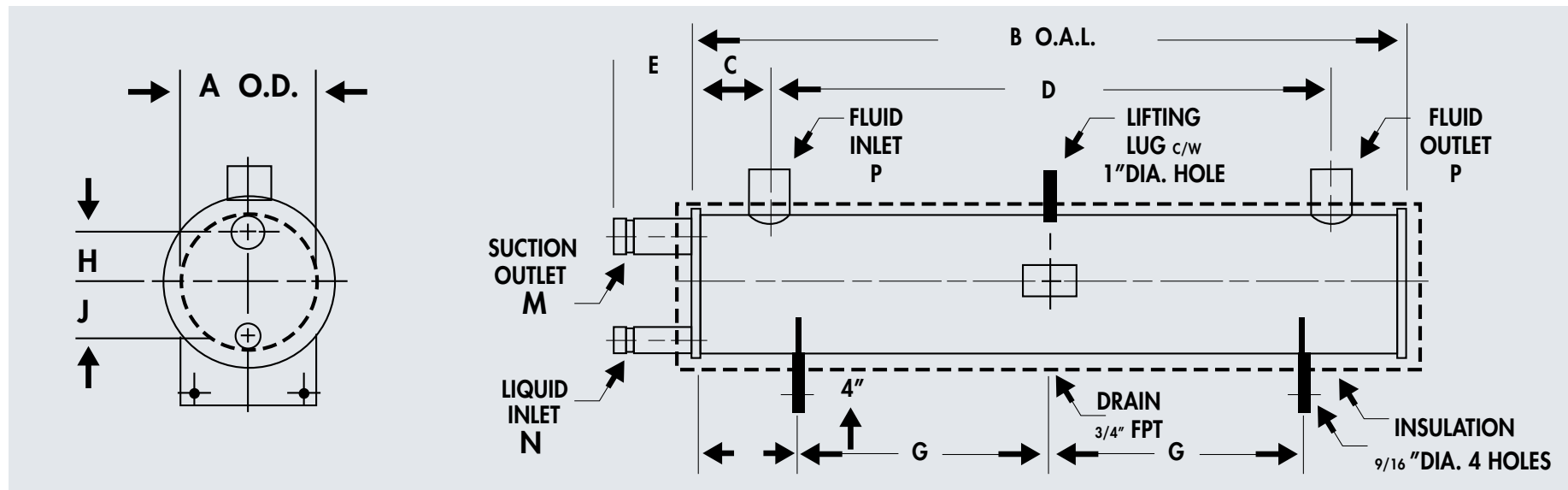


DIRECT EXPANSION CHILLERS



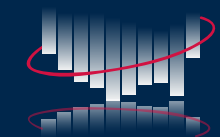
FEATURES:

- ✓ Special Microfin Tubes for high transfer capability and more compact chiller sizes.
- ✓ Available as standard in single or dual circuit
- ✓ 5-300 normal tons refrigeration
- ✓ Working Pressure - 225 PSI Tube Side
150 PSI Shell Side
- ✓ Removable heads for servicing
- ✓ Insulation, mounting legs and lifting bracket included
- ✓ Flange connections and heat tape available
- ✓ Special gasket material to ensure virtually leak free operation
- ✓ Certified by the National Board of Boiler and Pressure Vessel Inspectors. All vessels are designed and manufactured in accordance with Section VII of the ASME Code and are available with U or UM code symbol stamp.

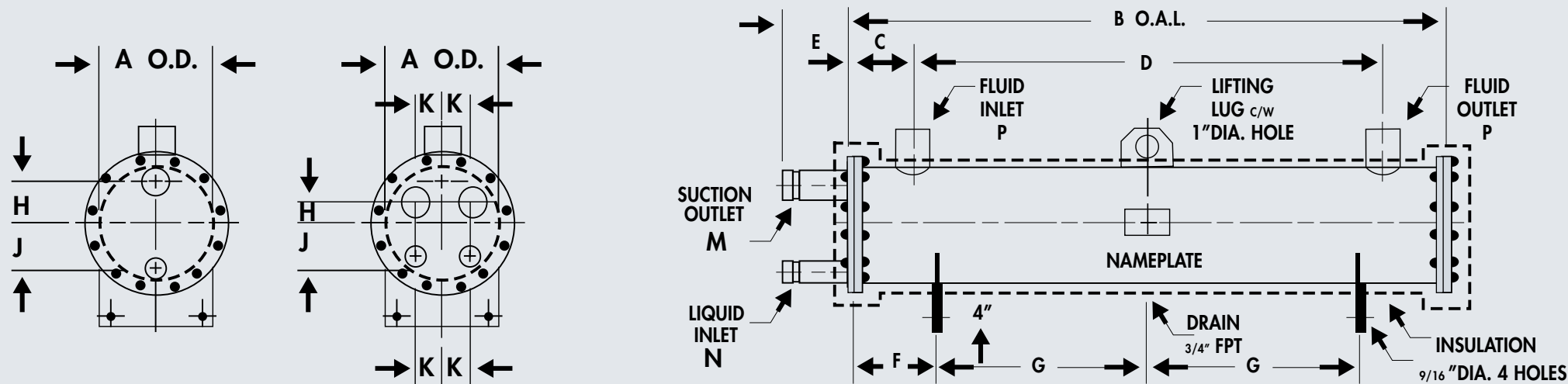
SINGLE CIRCUIT

| Model | Nom. Tons | Dimensional Data in Inches | | | | | | | | | | Suction Outlet M | Liquid Inlet N | Fluid In/Out P** | Approx. Ship Wt. in Lbs. |
|---------------|-----------|--------------------------------|--------------------------------|-------------------------------|--------------------------------|-------------------------------|--------------------------------|--------------------------------|-------------------------------|-------------------------------|-------------------------------|-------------------------------|-------------------------------|-------------------------------|--------------------------|
| | | A | B | C | D | E | F | G | H | J | Q | | | | |
| EM005-05060-1 | 5 | 5 ⁹ / ₁₆ | 61 ⁷ / ₈ | 3 ⁵ / ₈ | 51 ⁵ / ₈ | 5 ³ / ₄ | 8 ¹ / ₂ | 22 ¹ / ₂ | 1 ³ / ₄ | 2 ¹ / ₄ | 5 | 1 ¹ / ₈ | 5 ⁵ / ₈ | 1 | 225 |
| EM010-06054-1 | 10 | 6 ⁵ / ₈ | 56 | 3 ⁵ / ₄ | 45 ⁵ / ₈ | 5 ³ / ₄ | 7 ³ / ₄ | 20 ¹ / ₄ | 2 ¹ / ₄ | 2 ³ / ₄ | 5 ⁷ / ₈ | 1 ⁵ / ₈ | 7 ⁷ / ₈ | 1 | 240 |
| EM015-06072-1 | 15 | 6 ⁵ / ₈ | 74 | 4 ¹ / ₂ | 65 | 5 ³ / ₄ | 10 | 27 | 2 ¹ / ₄ | 2 ³ / ₄ | 5 ⁷ / ₈ | 1 ⁵ / ₈ | 7 ⁷ / ₈ | 1 ¹ / ₂ | 265 |
| EM020-08060-1 | 20 | 8 ⁵ / ₈ | 62 ⁷ / ₈ | 4 ¹ / ₂ | 53 ⁷ / ₈ | 5 ¹ / ₂ | 9 | 22 ¹ / ₂ | 2 ⁷ / ₈ | 3 ⁵ / ₈ | 7 ³ / ₄ | 2 ¹ / ₈ | 1 ¹ / ₈ | 1 ¹ / ₂ | 380 |
| EM025-08072-1 | 25 | 8 ⁵ / ₈ | 74 ⁷ / ₈ | 4 ³ / ₄ | 65 ¹ / ₂ | 5 ¹ / ₂ | 10 ¹ / ₂ | 27 | 2 ⁷ / ₈ | 3 ⁵ / ₈ | 7 ³ / ₄ | 2 ¹ / ₈ | 1 ¹ / ₈ | 2 | 405 |
| EM030-08072-1 | 30 | 8 ⁵ / ₈ | 74 ⁷ / ₈ | 4 ³ / ₄ | 65 ¹ / ₂ | 5 ¹ / ₂ | 10 ¹ / ₂ | 27 | 2 ⁷ / ₈ | 3 ⁵ / ₈ | 7 ³ / ₄ | 2 ¹ / ₈ | 1 ¹ / ₈ | 2 | 415 |

**Up to 2" I.P.S., F.P.T., 2 1/2 to 3" I.P.S., M.P.T., 3 1/2" to 8" I.P.S., Pipe Stubs



DIRECT EXPANSION CHILLERS



SINGLE AND DUAL CIRCUIT

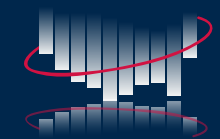
| Model | Nom. Tons | Dimensional Data in Inches | | | | | | | | | | | Suction Outlet M* | Liquid Inlet N* | Fluid In/Out p** | Approx. Ship Wt. in Lbs. | |
|---------------|-----------|--------------------------------|---------------------------------|--------------------------------|--------------------------------|-------------------------------|--------------------------------|--------------------------------|-------------------------------|-------------------------------|-------------------------------|-------------------------------|-------------------------------|-------------------------------|-------------------------------|--------------------------|--------|
| | | A | B | C | D | E | F | G | H | J | K | L | | | | | |
| EM010-06054-2 | 10 | 6 ⁵ / ₈ | 56 ¹ / ₂ | 3 ⁵ / ₈ | 49 ¹ / ₈ | 5 ¹ / ₂ | 8 | 20 ¹ / ₄ | 1 ⁷ / ₈ | 2 ¹ / ₄ | 1 ¹ / ₄ | 1 | 1 ¹ / ₈ | 5 ⁵ / ₈ | 1 | 310 | 2 |
| EM015-06072-2 | 15 | 6 ⁵ / ₈ | 74 ¹ / ₂ | 3 ⁷ / ₈ | 66 ⁵ / ₈ | 5 ¹ / ₂ | 10 ¹ / ₄ | 27 | 1 ⁷ / ₈ | 2 ¹ / ₄ | 1 ¹ / ₄ | 1 | 1 ³ / ₈ | 7 ⁷ / ₈ | 1 ¹ / ₄ | 345 | |
| EM020-08060-2 | 20 | 8 ⁵ / ₈ | 63 | 4 ¹ / ₂ | 54 | 5 ¹ / ₂ | 9 | 22 ¹ / ₂ | 2 ³ / ₈ | 3 ¹ / ₄ | 1 ³ / ₄ | 1 ¹ / ₈ | 1 ⁵ / ₈ | 7 ⁷ / ₈ | 1 ¹ / ₂ | 485 | |
| EM025-08072-2 | 25 | 8 ⁵ / ₈ | 75 | 4 ³ / ₄ | 65 ³ / ₈ | 5 ¹ / ₂ | 10 ¹ / ₂ | 27 | 2 ³ / ₈ | 3 ¹ / ₄ | 1 ³ / ₄ | 1 ¹ / ₈ | 1 ⁵ / ₈ | 7 ⁷ / ₈ | 2 | 510 | |
| EM030-08072-2 | 30 | 8 ⁵ / ₈ | 75 | 4 ³ / ₄ | 65 ¹ / ₂ | 5 ¹ / ₂ | 10 ¹ / ₂ | 27 | 2 ³ / ₈ | 3 ¹ / ₄ | 1 ³ / ₄ | 1 ¹ / ₈ | 1 ⁵ / ₈ | 7 ⁷ / ₈ | 2 | 520 | |
| EM035-10054-2 | 35 | 10 ³ / ₄ | 58 | 5 ¹ / ₄ | 47 ¹ / ₂ | 5 ¹ / ₄ | 8 ¹ / ₂ | 20 ¹ / ₄ | 2 ⁷ / ₈ | 3 ³ / ₄ | 2 ¹ / ₄ | 1 ¹ / ₂ | 2 ¹ / ₈ | 1 ¹ / ₈ | 2 ¹ / ₂ | 730 | 1 or 2 |
| EM050-10072-2 | 50 | 10 ³ / ₄ | 76 | 5 ¹ / ₂ | 64 ³ / ₄ | 5 ¹ / ₄ | 11 | 27 | 2 ⁷ / ₈ | 3 ³ / ₄ | 2 ¹ / ₄ | 1 ¹ / ₂ | 2 ¹ / ₈ | 1 ¹ / ₈ | 2 ¹ / ₂ | 810 | |
| EM060-10096-2 | 60 | 10 ³ / ₄ | 100 | 6 ³ / ₄ | 86 ³ / ₈ | 5 ¹ / ₄ | 14 | 36 | 2 ⁷ / ₈ | 3 ³ / ₄ | 2 ¹ / ₄ | 1 ⁵ / ₈ | 2 ¹ / ₈ | 1 ¹ / ₈ | 3 | 925 | |
| EM075-12072-2 | 75 | 12 ³ / ₄ | 76 ¹ / ₂ | 8 | 60 ³ / ₈ | 5 ¹ / ₄ | 11 ¹ / ₄ | 27 | 3 ¹ / ₄ | 4 ⁷ / ₈ | 2 ⁵ / ₈ | 1 ³ / ₄ | 2 ⁵ / ₈ | 1 ³ / ₈ | 3 | 1075 | |
| EM090-12096-2 | 90 | 12 ³ / ₄ | 100 ¹ / ₂ | 9 ¹ / ₂ | 81 ³ / ₈ | 5 ¹ / ₄ | 14 ¹ / ₄ | 36 | 3 ¹ / ₄ | 4 ⁷ / ₈ | 2 ⁵ / ₈ | 1 ³ / ₄ | 2 ⁵ / ₈ | 1 ³ / ₈ | 4 | 1230 | |
| EM100-12108-2 | 100 | 12 ³ / ₈ | 112 ¹ / ₂ | 10 ¹ / ₂ | 91 ³ / ₈ | 5 ¹ / ₄ | 15 ³ / ₄ | 40 ¹ / ₂ | 3 ¹ / ₄ | 4 ⁷ / ₈ | 2 ⁵ / ₈ | 1 ³ / ₄ | 2 ⁵ / ₈ | 1 ³ / ₈ | 4 | 1310 | |
| EM125-14108-2 | 125 | 14 | 113 | 10 ³ / ₄ | 90 ⁷ / ₈ | 4 ³ / ₄ | 16 | 40 ¹ / ₂ | 3 ⁵ / ₈ | 4 ⁷ / ₈ | 2 ³ / ₄ | 2 ¹ / ₄ | 3 ¹ / ₈ | 1 ⁵ / ₈ | 4 | 1670 | |
| EM150-16096-2 | 150 | 16 | 101 ¹ / ₂ | 10 ³ / ₈ | 81 ¹ / ₄ | 4 ³ / ₄ | 14 ³ / ₄ | 36 | 4 | 6 | 3 ¹ / ₂ | 2 | 3 ¹ / ₈ | 1 ⁵ / ₈ | 5 | 1995 | |
| EM185-16108-2 | 185 | 16 | 113 ¹ / ₂ | 12 ¹ / ₈ | 89 ¹ / ₄ | 4 ³ / ₄ | 16 ¹ / ₄ | 40 ¹ / ₂ | 4 | 6 | 3 ¹ / ₂ | 2 | 3 ⁵ / ₈ | 2 ¹ / ₈ | 5 | 2135 | |
| EM225-18108-2 | 225 | 18 | 113 ¹ / ₂ | 13 ³ / ₄ | 86 | 4 ³ / ₄ | 16 ¹ / ₄ | 40 ¹ / ₂ | 3 | 6 | 4 ³ / ₈ | 3 | 3 ⁵ / ₈ | 2 ¹ / ₈ | 6 | 2600 | |
| EM300-20108-2 | 300 | 20 | 114 | 13 | 88 | 4 ¹ / ₄ | 16 ¹ / ₂ | 40 ¹ / ₂ | 3 ¹ / ₂ | 6 | 4 ¹ / ₂ | 3 ¹ / ₄ | 4 ¹ / ₈ | 2 ¹ / ₈ | 8 | 3145 | |

*Connection sizes shown are for 2 circuit. For single circuit sizes contact Sales Office

**Up to 2" I.P.S., F.P.T., 2 1/2 to 3" I.P.S., M.P.T., 3 1/2" to 8" I.P.S., Pipe Stubs

Custom units available upon request.

Heat Transfer Products & Pressure Vessels



NATIONWIDECOILS